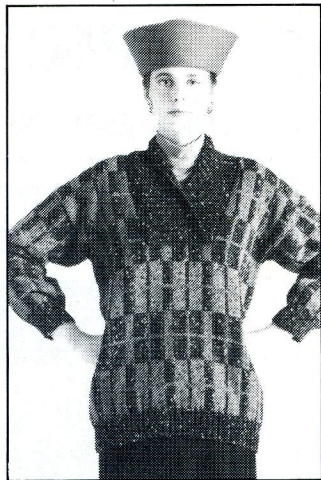


3 PLAID SWEATER WITH SHAWL COLLAR



PATTERN RATING

** Fairly easy, for knitters with some experience.

MACHINES

This pattern is suitable for standard gauge punchcard machines with or without a ribber.

MATERIALS

Sirdar Sovereign Escort Double Knitting.
8 [8, 9, 9, 10, 10] × 50g balls in black with white (MC).
3 [3, 4, 4, 4, 4] × 50g balls in Royal Dragoon (A).
3 [3, 3, 3, 3, 4] × 50g balls in Carolean Consort (B).
2 [2, 3, 3, 3, 4] × 50g balls in Flamenco Fun (C).

Sovereign Escort Double Knitting is 43% Wool, 39% Acrylic, 18% Nylon. If you have difficulty obtaining this yarn and would like a list of your local stockists, please write to Sirdar plc, Flanshaw Lane, Alverthorpe, Wakefield, West Yorkshire WF2 9ND.

SILVER GAUGE READING

Heavy yarn.

MEASUREMENTS

To fit bust 82 [87, 92, 97, 102, 107] cm, 32 [34, 36, 38, 40, 42] in.
Actual size 99 [104, 110, 114, 118, 124] cm, 39 [41, 43¼, 45, 46½, 48¾] in.
Length to shoulder 66 [66, 67, 67, 68, 68] cm, 26 [26, 26½, 26½, 26¾, 26¾] in.
Sleeve seam 38 [42, 44, 44, 46, 46] cm, 15 [16½, 17¼, 17¼, 18, 18] in.

Instructions are written for the smallest size, larger sizes follow in square brackets. If only one figure is given, it applies to all sizes.

TENSION

27 stitches and 32 rows to 10 cm, 4 in measured over Fair Isle pattern (tension dial setting approximately 10).

For perfect results, please check your tension carefully.

ABBREVIATIONS

See page 4.

KNITTING NOTES

We used knit side of knitting as right side of garment.

PATTERN NOTES

Punch card as shown before starting to knit.
Two colour Fair Isle rows should be knitted with first colour given in back feeder 1(A) to knit background and second colour given in front feeder 2(B) to knit contrast pattern.

FAIR ISLE PATTERN BACK AND FRONT

K 16 rows MC/A, 2 rows B only (st st), 16 rows MC/A, 16 rows B/MC, 2 rows C only (st st), 16 rows B/MC, 16 rows MC/C, 2 rows A only (st st), 16 rows MC/C, 16 rows A/MC, 2 rows B only (st st), 16 rows A/MC, 16 rows MC/B, 2 rows C only (st st), 16 rows MC/B, 16 rows C/MC, 2 rows A only (st st) and 4 [4, 8, 8, 10, 10] rows C/MC.

SLEEVES

1ST AND 2ND SIZES

Work as for back and front starting with row 19 [5].

3RD AND 4TH SIZES

K 2 rows MC/A, then work as for back and front.

5TH AND 6TH SIZES

K 8 rows C/MC, then work as for back and front.

BACK

MACHINES WITH RIBBER

With ribber in position and carriage at right, set machine for ▶

