



1 DIAMOND PATTERN SWEATER



PATTERN RATING

** Fairly easy, for knitters with some experience.

MACHINES

This pattern is suitable for standard gauge machines with or without a ribber.

MATERIALS

Sirdar Cotton Crepe.
12 [13, 13, 14, 14, 15] × 50g balls in Trojan Pink (MY).
3 small buttons.
Embroidery thread in various colours.
3.00 mm crochet hook.

Cotton crepe is 60% Cotton, 40% Acrylic. If you have difficulty obtaining this yarn and would like a list of your local stockists, please write to Sirdar Plc, Flanshaw Lane, Alverthorpe, Wakefield, West Yorkshire WF2 9ND.

SILVER GAUGE READING

Heavy yarn.

MEASUREMENTS

To fit bust 82 [87, 92, 97, 102, 107] cm, 32 [34, 36, 38, 40, 42] in.
Actual size 94 [100, 105, 110, 115, 120] cm, 37 [39½, 41¼, 43¼, 45¼, 47¼] in.
Length to shoulder 55 [55, 55, 58, 58, 58] cm, 21¾ [21¾, 21¾, 22¾, 22¾, 22¾] in. Sleeve seam 41.5 [41.5, 43, 43, 45.5, 45.5] cm, 16½, [16½, 17, 17, 18, 18] in.

Instructions are written for the smallest size, larger sizes follow in square brackets. If only one figure is given, it applies to all sizes.

TENSION

24 stitches and 33 rows to 10 cm, 4 in measured over stocking stitch (tension dial setting approximately 10).

For perfect results, please check your tension carefully.

ABBREVIATIONS

See page 4.

KNITTING NOTES

We used knit side of knitting as right side of garment.

BACK

MACHINES WITH RIBBER

With ribber in position and carriage at right, set machine for 1×1 rib. Push 57 [61, 64, 67, 70, 73] Ns at left and right of centre 0 to WP. 114 [122, 128, 134, 140, 146] Ns. Push corresponding Ns on ribber to WP. Arrange Ns for 1×1 rib. Using MT-5/MT-5 and MY, cast on and K 3 rubular rows. Carriage is at right. Set carriage for 1×1 rib knitting. Set RC at 000. Using MT-4/MT-4, K 1 row. Using MT-3/MT-3, K 1 row. Using MT-2/MT-2, K 1 row. Using MT-1/MT-1, K 17 rows. Transfer sts for st st.

MACHINES WITHOUT RIBBER

Push 57 [61, 64, 67, 70, 73] Ns at left and 56 [61, 64, 67, 70, 73] Ns at right of centre 0 to WP. 113 [122, 128, 134, 140, 146] Ns. Push every 3rd N back to NWP. Using MT and WY, cast on and K a few rows ending with carriage at left. Set RC at 000. Using MT-2 and MY, K 41 rows. Push Ns from NWP to WP and make a hem by placing loops of first row worked in MY evenly along the row. Unravel WY when work is completed.

1ST SIZE

Inc 1 st at right edge.

ALL SIZES

114 [122, 128, 134, 140, 146] sts.

ALL MACHINES

Set RC at 000 *.

Using MT, K 90 [90, 90, 94, 94, 94] rows. Work measures 34.5 [34.5, 34.5, 35.5, 35.5, 35.5] cm, 13½, [13½, 13½, 14, 14, 14] in.

SHAPE ARMHOLES

Cast off 4 sts at beg of next 2 rows, 3 sts at beg of next 2 rows and 2 sts at beg of next 2 rows. Dec 1 st at each end of next and every foll alt row until 86 [94, 98, 104, 110, 116] sts rem. K 17 [17, 15, 21, 21, 21] rows.

BACK OPENING

Push 43 [47, 49, 52, 55, 58] Ns at left to HP and cont on rem sts for first side.

K 36 rows.

SHAPE SHOULDER AND NECK

Cast off 6 [8, 8, 9, 10, 11] sts at beg of next row, 15 sts at beg of next row, 6 [8, 8, 9, 10, 11] sts at beg of next row and 9 sts at beg of next row. Cast off rem 7 [7, 9, 10, 11, 12] sts.

With carriage at left, push rem Ns from HP to UWP. Finish to correspond with first side reversing shapings.

FRONT

Work as for back to *.

Using MT, K 1 row. Cont in lace patt from Chart 1, K 86 [86, 86, 92, 92, 92] rows. Cont in lace patt from Chart 2, K 3 [3, 3, 1, 1, 1] rows. RC shows 90 [90, 90, 94, 94, 94] and work measures 34.5 [34.5, 34.5, 35.5, 35.5, 35.5] cm, 13½ [13½, 13½, 14, 14, 14] in.

SHAPE ARMHOLES

Cast off 4 sts at beg of next 2 rows, 3 sts at beg of next 2 rows and 2 sts at beg of next 2 rows. Dec 1 st at each end of next and every foll alt row until 86 [94, 98, 104, 110, 116] sts rem. K 29 [29, 27, 33, 33, 33] rows.

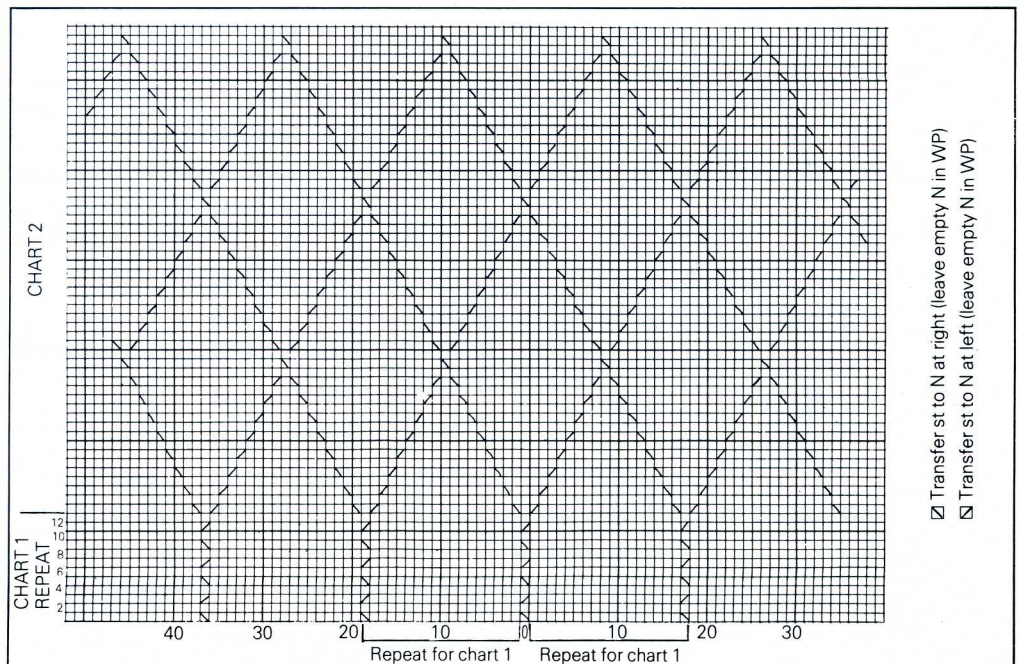
SHAPE NECK

Using a length of MY, cast off centre 16 sts. Using nylon cord, K 35 [39, 41, 44, 47, 50] sts at left by hand taking Ns down to NWP. Cont on rem sts for first side. K 1 row. Cast off 5 sts at beg of next row. K 1 row. Cast off 2 sts at beg of next and foll alt row, K 1 row. Dec 1 st at neck edge of next and every foll alt row until 19 [23, 25, 28, 31, 34] sts rem. K 4 rows.

SHAPE SHOULDER

Cast off 6 [8, 8, 9, 10, 11] sts at beg of next and foll alt row, K 1 row. Cast off rem 7, [7, 9, 10, 11, 12] sts.

With carriage at left, unravel nylon cord over rem Ns, bringing Ns back to WP. Finish to correspond with first side reversing shapings.



SLEEVES

Push 68 [74, 74, 78, 78, 82] Ns to WP. Using MT and WY, cast on and K a few rows ending with carriage at right. Set RC at 000. Using MY, K 7 rows. Shape sides by inc 1 st at each end of next and every foll 7th row until there are 102 [108, 108, 112, 112, 116] sts. K 4 [4, 10, 10, 18, 18] rows. RC shows 124 [124, 130, 130, 138, 138] and work measures 37.5 [37.5, 39, 39, 41.5, 41.5] cm, 14¾ [14¾, 15½, 15½, 16¼, 16¼] in.

SHAPE TOP

Cast off 4 sts at beg of next 2 rows, 3 sts at beg of next 2 rows and 2 [2, 2, 2, 2, 3] sts at beg of next 2 rows. Dec 1 st at each end of next and every foll alt row until 44 [42, 42, 46, 46, 44] sts rem.

1ST SIZE

K 3 rows. Dec 1 st at each end of next and foll 4th row.

4TH AND 5TH SIZES

K 3 rows. Dec 1 st at each end of next row.

ALL SIZES

40 [42, 42, 44, 44, 44] sts. K 1 row. Cast off.

and K a few rows ending with carriage at left. Set RC at 000. Using MT-2 and MY, K 27 rows. Push Ns from NWP to WP and make a hem by placing loops of first row worked in MY evenly along the row. Unravel WY when work is completed.

ALL MACHINES

With P side facing, replace 68 [74, 74, 78, 78, 82] sts from lower edge of sleeve on to Ns, gathering evenly. Using MT, K 1 row. Cast off.

NECK EDGING

Join shoulder seams.

Push 3 Ns to WP. With P side facing, pick up 3 sts from left side of back neck edge and place on to Ns. Using MT and MY, K 8 rows.

* Pick up next 3 sts from neck edge and place on to same Ns. K 8 rows. Repeat from * around neck edge. Pick up last 3 sts from neck edge and place on to same Ns. Cast off.

PRESSING

With wrong side facing, pin out all pieces to measurements given. Cover with a damp cloth and allow to dry.

MAKING UP

Gather cast off edge of sleeve and set in. Join side and sleeve seam. Work 1 row of double crochet and 1 row of crab stitch (double crochet worked from left to right) along both edges of back opening. Crochet three buttonloops along left edge of back opening. Sew on buttons. Embroider flowers using lazy daisy stitches and back stitch as shown in photograph.

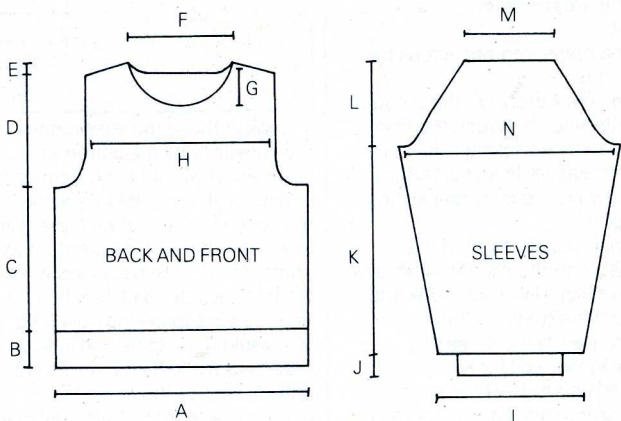
CUFFS

MACHINES WITH RIBBER

With ribber in position and carriage at right, set machine for 1×1 rib. Using MT-5/MT-5 and MY, cast on 57 [59, 59, 63, 63, 65] sts in 1×1 rib. K 3 tubular rows. Carriage is at right. Set carriage for 1×1 rib knitting. Set RC at 000. Using MT-4/MT-4, K 1 row. Using MT-3/MT-3, K 1 row. Using MT-2/MT-2, K 1 row. Using MT-1/MT-1, K 10 rows. Transfer sts for st st.

MACHINES WITHOUT RIBBER

Push 56 [59, 59, 62, 62, 65] Ns to WP. Push every 3rd N back to NWP. Using MT and WY, cast on



- A = 47.5 [50.5, 53, 55.5, 58, 60.5] cm
- B = 7 cm
- C = 27.5 [27.5, 27.5, 28.5, 28.5, 28.5] cm
- D = 20.5 [20.5, 20.5, 22.5, 22.5, 22.5] cm
- E = 1 cm
- F = 20 cm
- G = 8 cm
- H = 35.5 [39, 40.5, 43, 45.5, 48] cm
- I = 28 [30.5, 30.5, 32.5, 32.5, 34] cm
- J = 4 cm
- K = 37.5 [37.5, 39, 39, 41.5, 41.5] cm
- L = 16 [16, 16, 17.5, 17.5] cm
- M = 16.5 [17.5, 17.5, 18, 18, 18] cm
- N = 42.5 [45, 45, 46.5, 46.5, 48] cm