

# Pattern 16

Skirt: 80g.  
Leggings: 100g.

## MAIN TENSION

30 sts and 42 rows to 10cm measured over st st (tension dial approx 5). Tension must be matched exactly before starting garment.

## ABBREVIATIONS

See page 70.

## NOTE

Knit side is used as right side. Measurements given are those of finished garment and should not be used to measure work on the machine.

## PUNCHCARD PATTERN

Punch card before starting to knit.

## PATTERN NOTE

Fair Isle patt worked using MC in feeder 1/A and A in feeder 2/B throughout.

Flowers shown have been worked in crochet. If desired, substitute small appliqué flowers for crochet flowers — col B not required with bought flowers.

## CARDIGAN

### BACK

With RB in position set machine for 1x1 rib. Push 69[77:85:93] Ns on MB and corresponding Ns on RB to WP. Arrange Ns for 1x1 rib. CAR. Using MC, cast on and K3 tubular rows.

Set RC at 000. Using MT-3/MT-3, K 12[12:16:16] rows. Transfer sts to MB. Inc 1 st. 70[78:86:94] sts.

\* Set RC at 000. Using MT, K3 rows. Insert punchcard and lock on first row. Set carr to select/memorise for patt and K1 row. Release punchcard and set carr for Fair Isle (see patt note). Using MT+1, K16 rows. Set carr for st st and using MT \*\* K until RC shows 38[44:48:52]. Place a marker at each end. K until RC shows 82[94:102:110].

## SHAPE NECK

Using a separate piece of MC, cast off 28[30:32:32] sts at centre. Set carr for HP and push 21[24:27:31] Ns at left to HP. Cont on rem sts at right for first side. K4 rows. Cast off. CAL. Set carr so that HP Ns will K and work to correspond with first side.

## RIGHT FRONT

With RB in position, set machine for 1x1 rib. Push 55[63:69:75] Ns on MB and corresponding Ns on RB to WP. Arrange Ns for 1x1 rib. CAR. Using MC, cast on and K3 tubular rows.

Set RC at 000. Using MT-3/MT-3, K 5[5:7:7] rows. Work a buttonhole (for girl's cardigan only, on left front for boy's) by transferring the 16th[16th:18th:20th] st on to its adjacent N, leaving empty N in WP. K until RC shows 12[12:16:16]. Transfer sts to MB. Inc 1 st at right edge (left for left front). 56[64:70:76] sts.

Work as given for back from \* to \*\*, at the same time

## SHAPE NECK EDGE

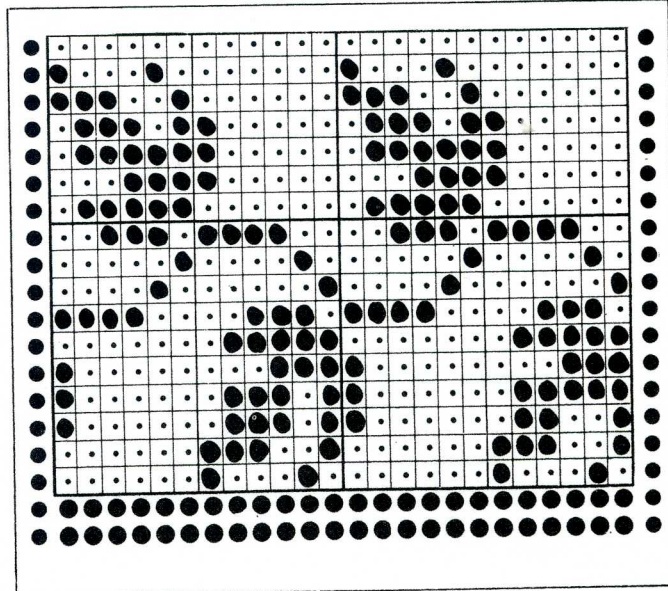
K until RC shows 4. Dec 1 st at left (right for left front) on next and every foll alt row 11[12:12:5] times in all. \*\*K1 row. Dec 1 st at neck edge on next row, K2 rows. Dec 1 st at neck edge on next row, K1 row\*\*. Rep from \*\* to \*\*, 12[15:15:20] times in all. Dec 0[0:1:0] st at neck edge on 0[0:next:0] row. 21[24:27:31] sts, at the same time when RC shows 38[44:48:52], place a marker at armhole edge. K until RC shows 86[98:106:114]. Cast off.

## LEFT FRONT

Work as given for right front, reversing shaping and adding or omitting buttonhole as appropriate.

## SLEEVES

With RB in position set machine for 1x1 rib. Push 45[51:53:55] Ns on MB and corresponding Ns on RB to WP.



**MACHINES:** These instructions are written for standard gauge punchcard machines with ribber

**MACHINES WITHOUT RIBBER:** See page 70

**YARN:** Amberyarn Academy

**FIBRE CONTENT:** 100%

Courtelle

**COLOUR:** We used White Shade 27 (MC), Light Green Shade 12 (A) and Shade 23 (B) for girl's set and Blue Shade 28 (MC), Light Green Shade 12 (A) and Yellow Shade 24 (B) for boy's set

**STOCKISTS:** If you have any difficulty in obtaining this yarn, please write to Amberyarn, Dock Mills, Dockfield Terrace, Shipley, W. Yorks, BD17 7AW

## SIZES

To suit chest 41[46:51:56]cm.

## CARDIGAN

Finished measurement 46[51:56:61]cm.

Length 23.5[26:29:31]cm.

Sleeve seam 16[18:20:22]cm.

## SKIRT

Length 19[21:23:25]cm.

## LEGGINGS

Inside leg seam 24[25:27:29]cm.

Figures in square brackets [ ] refer to larger sizes; where there is only one set of figures, this applies to all sizes.

## MATERIALS

Amberyarn Academy.

1 x 400g cone MC.

Small amounts of A and B.

3mm crochet hook.

Note: Small appliqué flowers can be substituted for crochet flowers.

## CARDIGAN

2 buttons.

## SKIRT AND LEGGINGS

Narrow elastic for waist.

## GARMENT WEIGHS

For size 51cm:

Cardigan: 100g.



Work as given for back to \*\*, at the same time when RC shows 4[5:4:4], inc 1 st at each end of next and every foll 4th[5th:4th:4th] row, 12[12:14:17] times in all. 70[76:82:90] sts. K until RC shows 54[62:66:76]. Cast off.

#### FRONT BANDS

Block pieces to correct measurements, cover with a damp cloth and allow to dry. Join shoulder seams.

With RB in position set machine for 1x1 rib. Push 101[105:111:117] Ns on MB and corresponding Ns on RB to WP. Arrange Ns for 1x1 rib. CAR. Using MC, cast on and K3 tubular rows.

Set RC at 000. Using MT-3/MT-3, K4 rows. Make buttonhole by transferring the 5th[5th:7th:7th] st on MB on to its adjacent N on RB, leaving empty N in WP (at left edge for boy's and at right edge for girl's). K5 rows. Transfer sts to MB. Using MT, K1 row. With wrong side facing, pick up appropriate front and back neck, to centre and hang evenly on to Ns. Using MT+5, K1 row. Cast off using latch tool (or linker).

#### FLOWER TRIM

Work 15 for cardigan. Work 10 for skirt or leggings.

Using B and 2.5 or 3mm crochet hook (or hook supplied with some machines), work 4 chain and join with slipstitch.

\*Work 3 chain, 2 trebles into ring, 1 double crochet into ring\*. Rep from \* to \*, 4 times in all. Fasten off.

#### TO MAKE UP

Set in sleeves between markers. Join side and sleeve seams. Join neckband at centre back. Work 1 row of double crochet along lower edge of bands. Sew on buttons to correspond with buttonholes. Sew on flowers as shown.

#### SKIRT

##### BACK AND FRONT ALIKE

Push 100[106:112:118] Ns to WP. Using WY and MT, cast on and K a few rows ending CAL. Using nylon cord, K1 row. Using MC and MT-1, K6 rows. Using MT+2, K1 row. Using MT-1, K6 rows. Turn a hem by picking up loops of first row worked in MC and hang evenly along the row. Using MT, K1 row. Remove nylon cord (thus releasing WY).

Work as given for back cardigan from \* to \*\*. K until RC shows 76[84:88:100]. WK.

##### WAISTBAND

Push 72[78:84:96] Ns to WP. With wrong side facing, pick up sts below WY at top skirt and hang on to Ns, dec 28[28:28:22] sts evenly along the row. Using MC and MT, K1 row. Using MT-1, K9 rows. Using MT+2, K1 row. Using MT-1, K10 rows. Turn a hem by picking up loops of first row of band and hang evenly along the row. Using MT+5, K1 row.

Cast off using latch tool (or linker).

#### TO MAKE UP

Block pieces to correct measurements, cover with a damp cloth and allow to dry. Join side seams leaving a small opening in waistband. Thread elastic through waistband, adjust to fit and fasten off securely. Close waistband opening. Sew on flowers as shown.

#### LEGGINGS

##### RIGHT LEG

Push 86[92:98:110] Ns to WP. Using WY and MT, cast on and K a few rows ending CAR.

Using MC and MT, work as given for cardigan back from \* to \*\*. K until RC shows 88[92:100:110].

##### SHAPE CRUTCH

Set RC at 000. Cast off 3 sts at beg of next 2 rows. Dec 1 st at each end of next and every foll alt row 3 times in all. 74[80:86:98] sts. K until RC shows 58[64:66:68] (K1 extra row for left leg).

##### SHAPE BACK

Set carr for HP and always taking the yarn around the first inside N in HP, push 29[32:33:34] Ns at opposite side to carr to HP on next row, K1 row. Push 7[8:8:8] Ns at opposite side to carr to HP on next and every foll alt row, 3 times in all, K1 row. Set carr so HP Ns will K and K1 row.

##### WAISTBAND

Using MT+5, K1 row. Using MT-1, K10 rows. Using MT+2, K1 row. Using MT-1, K10 rows. Turn hem by picking up loops of row below worked at MT+5. Using MT+5, K1 row and cast off using latch tool (or linker).

##### LEFT LEG

Work as given for right leg, noting difference in rows to reverse shaping.

#### LEG CUFFS

With RB in position set machine for 1x1 rib. Push 51[57:63:71] Ns on MB and corresponding Ns on RB to WP. Arrange Ns for 1x1 rib. CAR. Using MC, cast on and K3 tubular rows. Using MT-3/MT-3, K12 rows. Transfer sts to MB. With wrong side of leggings facing, pick up sts from below WY on bottom leg and hang on to Ns, dec 35[35:35:39] sts evenly along the row. Using MT+5, K1 row. Cast off using latch tool (or linker).

#### TO MAKE UP

Block pieces to correct measurements, cover with a damp cloth and allow to dry. Join inside leg seam. Join crutch seams, leaving a small opening in waistband. Insert elastic, adjust to fit and fasten off securely. Close waistband opening. Sew on flowers as shown.

