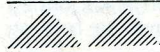


Pattern 8



MACHINES: These instructions are written for standard gauge punchcard or electronic machines with ribber

MACHINES WITHOUT

RIBBER: See page 67

YARN: Amberyarn Academy

FIBRE CONTENT: 100%

Courtelle

COLOUR: We used Shade 28

Pale Blue (MC) and Shade 26

Peach (C)

STOCKISTS: If you have any difficulty in obtaining this yarn, please write to Amberyarn,

Dock Mills, Dockfield Terrace, Shipley, W. Yorks BD17 7AW

SIZES

To suit chest 46[49:51:53]cm.

SWEATER

Finished measurement 55[57:59:63]cm.

Length 29[31:33:35]cm.

Sleeve seam 17[18:20:22]cm.

SLIPOVER

Finished measurement 50[54:57:60]cm.

Length 25[26.5:29:31]cm.

SHORTS

Inside leg 5[5.5:5.5:6]cm.

Figures in square brackets [] refer to larger sizes; where there is only one set of figures, this applies to all sizes.

MATERIALS

Amberyarn Academy.
1 x 400g cone in each of MC and C.

SWEATER

2 buttons.

SHORTS

Elastic to fit waist.

GARMENT WEIGHS

For size 51cm:

Sweater: 100g.

Slipover: 50g.

Shorts: 40g.

MAIN TENSION

30 sts and 42 rows to 10cm measured over st st (tension dial approx 5).

32 sts and 40 rows to 10cm measured over Fair Isle patt

(tension dial approx 6 = MT+1). Tensions must be matched exactly before starting garment.

ABBREVIATIONS

See page 67.

NOTE

Knit side is used as right side. Measurements given are those of finished garment and should not be used to measure work on the machine.

PUNCHCARD PATTERN

Punch card before starting to knit.

Note: Card is from Knitmaster patt set 53-54 No. 249.

PATTERN NOTE

Carr set for Fair Isle.

SWEATER

Patt worked using MC in feeder 1/A and C in feeder 2/B throughout.

SLIPOVER

Patt worked using C in feeder 1/A and MC in feeder 2/B throughout.

SWEATER

BACK

With RB in position, set machine for 1x1 rib. Push 87[91:95:101] Ns on MB and corresponding Ns on RB to WP. Arrange Ns for 1x1 rib. CAR. Using MC, cast on and K3 tubular rows. Using MT-3/MT-3, K2 rows. Using C, K8 rows. Using MC, K4 rows. Transfer sts to MB. Inc 1 st. 88[92:96:102] sts. Insert punchcard and lock on first row. Using MT, K1 row. Set carr to select/memorise for patt and K1 row. Release punchcard and set carr for patt (see note) **.

Set RC at 000. Using MT+1, K until RC shows 56[62:68:74].

SHAPE ARMHOLES

Cast off 6 sts at beg of next 2 rows. 76[80:84:90] sts *. K until RC shows 100[108:116:124].

SHAPE NECK

Make a note of punchcard patt row. Using a separate piece of MC, cast off 32[34:36:38] sts at centre. Using nylon cord, K sts at left by hand taking Ns down to NWP. Cont on rem 22[23:24:26] sts at right for first side. K4 rows. Cast off. CAR. Reset punchcard to noted row and lock. Unravel nylon cord from sts at left, bringing Ns down to WP. Set carr to select/memorise without K (part/slip/empty) and take to left. Complete left side to correspond with right.

FRONT

Work as given for back to *.

K until RC shows 70[78:86:94].

SHAPE FRONT OPENING

Make a note of punchcard patt row. Using a separate piece of MC, cast off 4 sts at centre. Using nylon cord, K 36[38:40:43] sts at left by hand taking Ns down to NWP. Cont on rem

36[38:40:43] sts at right for first side. K until RC shows 91[99:107:115].

SHAPE NECK

Cast off 5[5:6:6] sts at beg of next row, K1 row. Cast off 3 sts at beg of next row, K1 row. Cast off 2 sts at beg of next and every foll alt row, 3 times in all. K1 row. Dec 0[1:1:1] st at beg of next and foll alt row. 22[23:24:26] sts. K until RC shows 104[112:120:128]. Cast off.

CAR. Reset punchcard to noted row and lock. Unravel nylon cord from sts at left, bringing Ns down to WP. Set carr to select/memorise without K (part/slip/empty) and take to left. Reset RC at 70[78:86:94]. Release punchcard and set carr for patt (see-note). Complete left side to correspond with right.

SLEEVES

With RB in position, set machine for 1x1 rib. Push 55[59:61:61] Ns on MB and corresponding Ns on RB to WP. Arrange Ns for 1x1 rib. Work as given for back to **.

56[60:62:62] sts. Set RC at 000. Using MT+1, K5 rows. Inc 1 st at each end of next and every foll 5th[5th:6th:

5th] row, 11[11:11:13] times in all. 78[82:84:88] sts. K until RC shows 56[60:68:76]. Place a marker at each edge. K8 rows and cast off.

FRONT BANDS

With RB in position, set machine for 1x1 rib. Push 23 Ns on MB and corresponding Ns on RB to WP. Arrange Ns for 1x1 rib. CAR. Using MC, cast on and K3 tubular rows. Using MT-2/MT-2, K2 rows. Using C, K2 rows.

BUTTONHOLE BAND

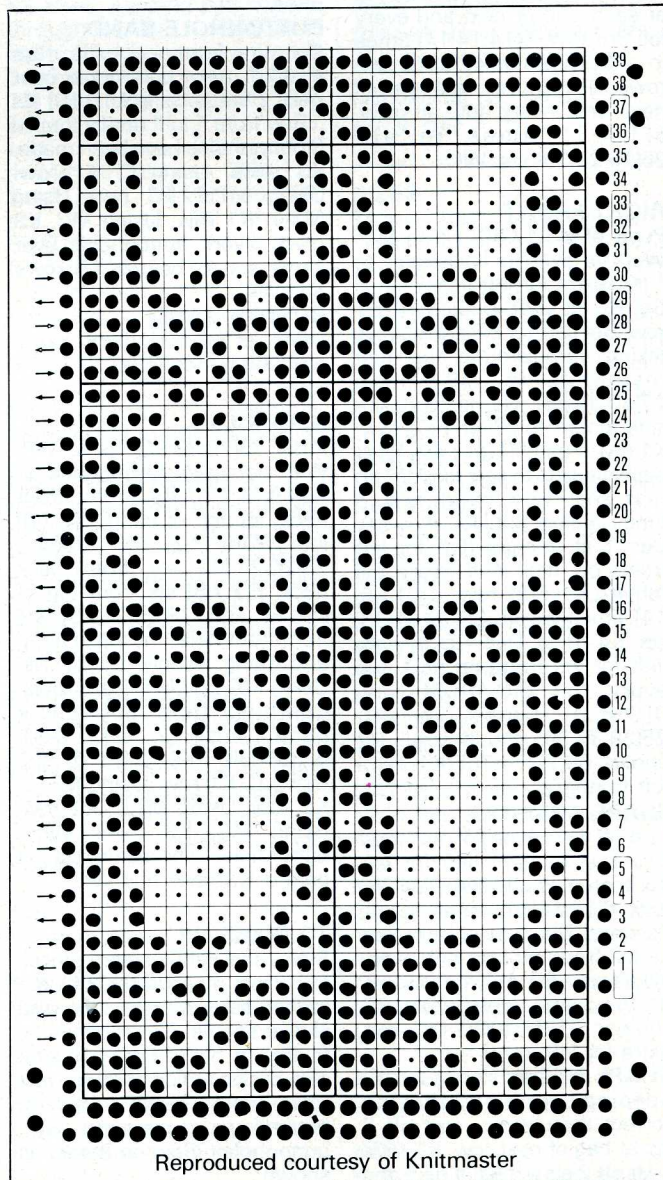
Make a buttonhole by transferring 4th st from each end on MB to its adj N on RB, leaving empty Ns in WP. K2 rows. Using MC, K3 rows. Transfer sts to MB. Using MT, K1 row. With wrong side facing, pick up front opening edge and hang evenly on to Ns. Using MT+5, K1 row and cast off using latch tool.

BUTTON BAND

Work as given for buttonhole band, omitting buttonholes.

COLLAR

With RB in position, set machine for 1x1 rib. Push 121[125:129:135] Ns on MB and corresponding Ns on RB to



Reproduced courtesy of Knitmaster

WP. Arrange Ns for 1x1 rib. CAR. Using MC, cast on and K3 tubular rows. Set RC at 000. Using MT-2/MT-2, K2 rows. Using C, K10 rows. Using MC, K4 rows. Set carr for HP and always taking yarn around the first inside N in HP, push 30 Ns at opposite side to carr to HP on next 2 rows. Push 10 Ns at opposite side to carr to HP on next 4 rows. Push 6 Ns at opposite side to carr to HP on next 2 rows. Push 6 Ns at opposite side to carr to UWP on next 2 rows. Push 10 Ns at opposite side to carr to UWP on next 4 rows. Push 30 Ns at opposite side to carr to UWP on next 2 rows. Transfer sts to MB. Cast off loosely.

TO MAKE UP

Block pieces to correct measurements, cover with a damp cloth and allow to dry. Join shoulder seams. Pin collar in place on right side of sweater, starting and ending collar at centre of front bands. Backstitch in place. Set in sleeves, sewing rows above markers to cast off sts at armhole. Join side and sleeve seams. Sew on buttons to correspond with buttonholes.

SLIPOVER BACK

With RB in position, set machine for 1x1 rib. Push

81[87:91:97] Ns on MB and corresponding Ns on RB to WP. Arrange Ns for 1x1 rib. CAR. Using MC, cast on and K3 tubular rows. Using MT-3/MT-3, K14 rows. Transfer sts to MB. Inc 1 st. 82[88:92:98] sts. Using MT, K1 row. Insert punchcard and lock on first row. Set carr to select/memorise for patt and K1 row. Release punchcard and set carr for patt (see note). Set RC at 000. Using MT+1, K until RC shows 44[48:56:60].

SHAPE ARMHOLES

Cast off 5 sts at beg of next 2 rows. Cast off 3 sts at beg of next 2 rows. Cast off 2 sts at beg of next 2 rows. Dec 1 st at each end of next and every foll alt row, 3[4:4:4] times in all. 56[60:64:70] sts **. K until RC shows 88[94:104:112].

SHAPE SHOULDERS

Cast off 9[11:12:15] sts at beg of next 2 rows. WK over rem 38[38:40:40] sts.

FRONT

Work as given for back to **. K until RC shows 56[62:72:80].

SHAPE NECK

Make a note of punchcard patt row. Using nylon cord, K 28[30:32:35] sts at left by hand taking Ns down to NWP. Cont on rem sts at right for first side. Dec 1 st at neck edge on next 8[8:10:10] rows, K1 row. Dec 1 st at beg of next and every foll alt row, 11[11:10:10] times in all. 9[11:12:15] sts. K until

RC shows 88[94:104:112], cast off. CAR. Reset punchcard to noted row and lock. Unravel nylon cord from sts at left, bringing Ns down to WP. Set carr to select/memorise without K (part/slip/empty) and take to left. Reset RC at 56[62:72:80]. Complete left side to correspond with right.

NECKBAND

Join left shoulder seam. With RB in position, set machine for 1x1 rib. Push 73[73:75:75] Ns on MB and corresponding Ns on RB to WP. Arrange Ns for 1x1 rib. CAR. Using MC, cast on and K3 tubular rows. Using MT-3/MT-3, K7 rows. CAR. Transfer sts to MB. Using MT, K1 row. With wrong side facing, pick up 38[38:40:40] sts from below WY on back neck and 35 sts along half of front 'V' and hang evenly on to Ns. Using MT+5, K1 row. Cast off using latch tool.

With RB in position, set machine for 1x1 rib. Push 37 Ns on MB and corresponding Ns on RB to WP. Work as given for first part of band, completing by picking up rem half 'V' edge.

ARMBANDS

Join right shoulder seam. With RB in position, set machine for 1x1 rib. Push 91[95:99:107] Ns on MB and corresponding Ns on RB to WP.

Work as given for neckband, picking up armhole edge to complete.

TO MAKE UP

Block pieces to correct measurements, cover with a damp cloth and allow to dry. Join side seams. Mitre ribbing at centre front and join neckband seam.

SHORTS BACK

Push 74[80:86:90] Ns to WP. Using WY and MT, cast on and K a few rows ending CAR. Set RC at 000. Using MC and MT-1, K10 rows. Using MT+2, K1 row. Using MT-1, K10 rows. Turn a hem by picking up loops of first row worked in MC and hang evenly along the row. Using MT, K1 row.

SHAPE BACK

Set RC at 000. ** Set carr for HP and always taking yarn around the first inside N in HP, push 8[8:10:10] Ns at opposite side to carr to HP on next 6 rows. Push 8[8:10:10] Ns at opposite side to carr to UWP on next 6 rows.

Reset RC at 002 **. K until RC shows 64[70:78:84].

SHAPE CRUTCH

Set carr for HP. Push 37[40:43:45] Ns at opposite side to carr to HP. Cont on rem sts for first leg. K3 rows. Dec 1 st at left (right for 2nd leg) on next and every foll 3rd row, 3 times in all. 34[37:40:42] sts. K until RC shows 76[84:92:100]. WK.

CAL. Reset RC at 64[70:78:84]. Set carr so that HP Ns will K and work 2nd leg to correspond with first, noting difference in dec directions to reverse shaping.

FRONT

Work as given for back, omitting shaping section from ** to **.

LEG CUFFS

Join side seams. With RB in position, set machine for 1x1 rib. Push 67[73:79:83] Ns on MB and corresponding Ns on RB to WP. Arrange Ns for 1x1 rib. CAR. Using MC, cast on and K3 tubular rows. Using MT-3/MT-3, K5 rows. Transfer sts to MB. Using MT, K1 row. With wrong side facing, pick up sts from below WY on bottom leg and hang on to Ns, placing 2 sts on centre N at side seam. Remove WY. Using MT+5, K1 row. Cast off using latch tool.

TO MAKE UP

Block pieces to correct measurements, cover with a damp cloth and allow to dry. Join centre front and centre back seams, leaving a small opening at waist. Join cuff seams. Insert elastic in waistband, adjust to fit and fasten off securely. Close waistband opening.

