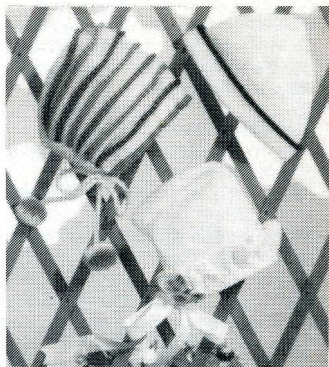


pattern 9



MACHINES: These instructions are written for standard gauge punchcard machines

YARN: Denys Brunton De-lux 4 ply

FIBRE CONTENT: 100% Acrylic

COLOUR: We used Shade 14 Cream (MC), Shade 24 Fashion Pink (A), Shade 7 Electric Blue (B) and Shade 21 Jade (C) for picot hat.

We used Shade 31 White (MC), Shade 8 Pink (A), Shade 24 Fashion Pink (B) and Pale Green (C) for lace bonnet.

We used Shade 31 White (MC) and Shade 10 Royal (C) for sailor hat

STOCKISTS: If you have any difficulty in obtaining this yarn, please write to Denys Brunton Designer Yarns, Moorland Mills, Law Street, Bradford Road, Cleckheaton, W. Yorks BD19 3QR

SIZES

To suit head circumference 36[42]cm.

Figures in square brackets [] refer to the larger size; where there is only one set of figures, this applies to both sizes.

MATERIALS

Denys Brunton Designer Yarns De-lux 4 ply.

1 x 400g cone in MC.

Small amounts in A, B and C (as appropriate).

LACE BONNET

0.8m x 2cm wide satin ribbon.

GARMENT WEIGHS

For size 36cm circumference

Picot hat: 50g.

Lace bonnet: 30g.

Sailor hat: 30g.

MAIN TENSIONS

26 sts and 48 rows to 10cm measured over picot patt (tension dial approx 7=MT).

28 sts and 44 rows to 10cm measured over st st (tension dial approx 7).

Tensions must be matched exactly before starting garment.

ABBREVIATIONS

See page 59.

NOTE

Knit side is used as right side. Measurements given are those of finished garment and should not be used to measure work on the machine.

PUNCHCARD PATTERNS

Punch cards or mark mylar sheet before starting to knit. Lace card marked for Brother machines.

Silver Reed/ Knitmaster/Toyota machines: work as fashion/multi-transfer lace, moving starting row and arrows down by 2 rows on Knitmaster and Silver Reed machines.

PATTERN NOTE

LACE PATTERN

Work lace pattern using punchcard for punchcard machines.

If lace carriage not available, work lace patt from manual transfer chart.

PICOT PATTERN

*Using B, K4 rows. Work picot line. K4 rows. Turn a hem by picking up loops of first row worked in B and hang evenly along the row. Using MC, K10 rows**. Rep from * to ** using in turn, A, C, A. These 40 rows form patt. When working picot section, disengage RC, use it only on MC rows.

SPECIAL NOTE

Manual crochet cast on was used for lace bonnet. This technique is often explained in your basic manual. If not, work thus:

Using WY and MT, cast on and K a few rows ending CAL. Using nylon cord, K1 row. CAR. Push all Ns to HP. Thread MC through yarn brake but not in carr. Make a slip knot and slip on to first N at left. Starting at left edge, take latch tool and hold loop of slip knot behind latch. Wrap yarn around left end N. Insert latch tool between the first and second Ns on left from below and catch the yarn with the latch tool. Keeping the yarn in the hook of the latch tool, pull yarn through chain loop and slip ~~hook~~ ^{hook} behind latch, making first st. Move tool between next 2 Ns. Rep the procedure of catching the yarn and forming the loops along the row until the last N. Place loop on latch tool on to hook of N. Thread up carr and K the first row.

PICOT HAT

Push 87[91] Ns to WP. Using WY and MT, cast on and K a few rows ending CAL. Using nylon cord, K1 row. Set RC at 000. Using MC and MT-1, K10 rows. Using MT and A, K4 rows. Work picot line. K4 rows. Turn a hem by picking up loops of first row worked in A and hang evenly along the row. Using MC and MT-1, K10 rows. Turn a hem by picking up loops of first row worked in MC and hang evenly along the row. Remove WY and K1 row. Set RC at 000. Using MT, work in picot patt (see patt note), until RC shows 60[70]. Cont in st st and MC throughout. **SHAPE BACK** Set RC at 000. Cast off 26[29] sts

at beg of next 2 rows. K 6[8] rows. Dec 1 st at each end of next and every foll 6th[8th] row, 6[5] times in all. 23 sts. K until RC shows 44[48]. WK.

LOWER EDGE

Pin out to hat to measurements given. Cover with a dry cloth and press lightly with a cool iron. Picot trim should be pressed towards back of hat. Push 83[89] Ns to WP. With wrong side facing, pick up 30[33] sts along each side of hat and 23 sts along back and hang evenly on to Ns. Using MC and MT, K1 row.

Ribbers: With RB in position, transfer sts for 1x1 rib. Hang comb and weight evenly. Using MT-2/MT-2, K15 rows. Transfer 3rd st at each end of MB to its adjacent N on RB, leaving empty Ns in WP. K3 rows. Transfer sts to MB and WK.

Single beds: Work picot line, pushing empty Ns to NWP. Using MT-2, K15 rows. Transfer 2nd st in WP at each end on to its adjacent st, leaving empty Ns in WP. K2 rows. Push empty Ns to WP. K2 rows and WK.

CORD

Push 4 Ns to WP. Using MC, work circular cord until it is approx 100cm long.

TO MAKE UP

Join back seams. Fold lower edge in half to inside and catch down each st. Thread cord through eyelets at lower edge and then through hem at front edge and second eyelet. Work 2 pom-poms and attach to ends of cord.

LACE BONNET MAIN SECTION

Push 90[96] Ns to WP. Using WY and MT, cast on and K a few rows ending CAR. Set RC at 000. Using MC and MT, K 56[60] rows.

SHAPE BACK

Set RC at 000. Cast off 10 sts at beg of next 6 rows. 30[36] sts. K 8[7] rows. Dec 1 st at each end of next and every foll 8th[7th] row, 4[5] times in all. K until RC shows 40[44]. Cast off.

LACE FRILL

Push 180[192] Ns to WP. Work crochet cast on (see special note).

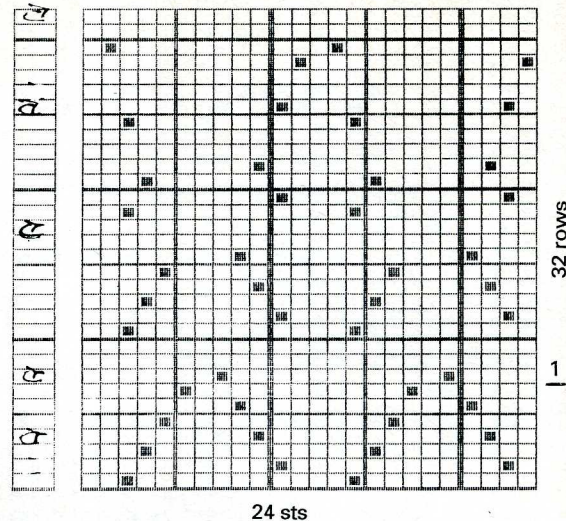
Set RC at 000. Using MC and MT, K2 rows. Work picot line. K2 rows. Insert punchcard for lace and lock on first row. Set carr to select/memorise for patt and K1 row. Release punchcard and set carr for transfer lace (see patt note). Work 1 complete repeat — RC shows 16. K1 row and WK.

Machines without lace carriage: Work as given above, but working lace transfers from manual lace chart.

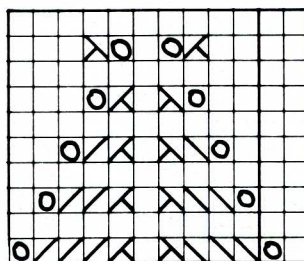
FRONT BAND

Remove WY from lower edge of frill and lightly steam press. Push 90[96] Ns to WP. With right side of bonnet facing, hang loops of first row worked in MC evenly on to Ns. Remove WY. With right side of frill facing, hang 2 sts on each N. Remove WY. Using MC and MT-1, K8 rows. Using MT+2, K1 row. Using MT-1, K8 rows and WK.

LACE PATTERN FOR BROTHER PUNCHCARD MACHINES



LACE CHART FOR HAND TRANSFER

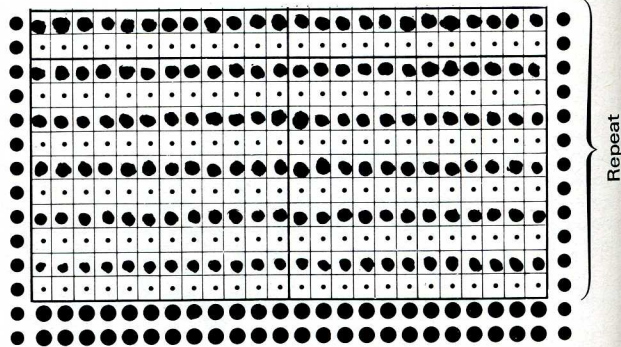


KEY:

- = st transferred to left
- = st transferred to right
- = 2 sts together
- = 2 sts together
- = hole

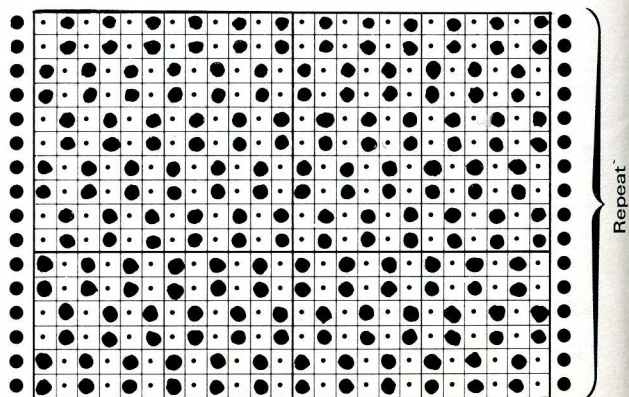
12 st repeat

PUNCHCARD 1 — GARTER STITCH PATTERN FOR SAILOR HAT



Reproduced courtesy of Brother

PUNCHCARD 2 — TUCK STITCH PATTERN FOR SAILOR HAT



loop

Bring yarn under (last N)

FLOWERS

(WORK THREE ALIKE)

Push 15 Ns to WP. Using WY and MT, cast on and K a few rows ending CAR. Using A and MT, K4 rows. Using MT+2, K2 rows. Work picot line. K2 rows. Using MT, K1 row. Using B, K3 rows. Break off yarn, leaving an end long enough to thread through sts. Thread through sts and release from machine.

Fold flower in half with right sides together. Join side seam and turn to outside. Pull up last row of sts and fasten off. Using C, work French knots (ie. embroider) in each flower as shown.

TO MAKE UP

Block pieces to correct measurements. Cover with a dry cloth and press lightly with a cool iron. Fold front band in half on to right side and finish by backstitching through last row worked in MC. Work 3 rows of double crochet along lower edge. Sew ribbons to corner at front edge. Sew flowers in place on lace edging. Using C, crochet a chain approx 15cm long. Tie in a bow and attach to hat with flowers as shown.

SAILOR HAT

Push 102[114] Ns to WP. Using WY and MT, cast on and K a few rows ending CAR. Using MC and MT, K 40[48] rows.

SHAPE TOP

Using nylon cord, K all sts except first 17[19] at right by hand, taking Ns down to NWP. *Dec 1 st ff at each end of next and every foll 4th row until 3 sts rem, K1 row. Transfer 2 outside

sts to centre st and cast off*.

Unravel nylon cord over next 17[19] sts, bringing Ns to WP. Work as given for first section from * to *. Work a further 4 sections alike (making 6 in all).

BRIM

Machines with garter carriage: Push 112[124] Ns to WP. Attach garter carr. Insert punchcard 1 (Card 2B in Brother basic set) and lock on first row. Using A and MT-1, cast on. Set RC at 000. Using MT, release card and K3 rows. Using MC, K19 rows. WK.

Machines without garter carriage: Push 102[114] Ns to WP. Using WY and MT, cast on and K a few rows ending CAR. Using nylon cord, K1 row. Using A, work crochet cast on (see special note). Insert punchcard 2 and lock on first row. Set carr to select/memorise for patt and K1 row. Release punchcard and set carr for tuck. K5 rows. Using MC, K24 rows. Set carr for st st and K1 row. WK.

TO MAKE UP

Block main piece to correct measurements. Cover with a dry cloth and press lightly with a cool iron. Using mattress stitch, join top sections. Join brim to main part by pushing 102[114] Ns to WP. With wrong side of main piece facing, pick up loops from first row worked in MC and hang evenly along the row. With wrong side of brim facing, hang sts on to same Ns (purl side is wrong side for tuck brim). For garter st brim, dec 10 sts evenly along the row. Using MC, K1 row. Cast off. Join centre back seam and brim seam. Turn brim to outside.

