







MACHINES: These instructions are written for standard gauge punchcard machines without ribber

YARN: Brockwell 4 ply Plain Cotton

FIBRE CONTENT: 100% Cotton

COLOUR: We used White (MC), Yellow (A) and Lime (B)

STOCKISTS: To obtain this yarn, please write to Brockwell Wools, Stansfield Mill, Triangle, Sowerby Bridge, W. Yorks HX6 3LZ

SIZES

To suit chest 46[51]cm.

CARDIGAN

Finished measurement 52[57]cm.

Length 28[29.5]cm.

Sleeve seam 15.5[18]cm.

DRESS

Finished measurement 50[54]cm.

Length 35.5[39.5]cm.

Sleeve seam 6cm.

HAT

Finished all round measurement 32[35]cm.

BOOTEES

Heel to toe measurement 9[10.5]cm.

MITTEN

Length 12[13.5]cm.

Figures in square brackets [] refer to the larger size; where there is only one set of figures, this applies to both sizes.

MATERIALS

Brockwell 4 ply Plain Cotton.

1 x 450g cone in MC.

1 x 50g cone in A and B.

3 small pearl buttons for cardigan.

4 small flat buttons for dress.

Fine crochet hook.

GARMENT WEIGHS

Cardigan: 147g for size 51cm.

Dress: 191g for size 51cm.

Hat: 50g for size 35cm.

Bootees: 37g for larger size.

Mittens: 25g for larger size.

MAIN TENSION

30 sts and 40 rows to 10cm measured over st st (tension dial approx 6).

Tension must be matched exactly before starting garment.

ABBREVIATIONS

See page 19.

NOTE

Knit side is used as right side. Measurements given are those of finished garment and should

not be used to measure work on the machine.

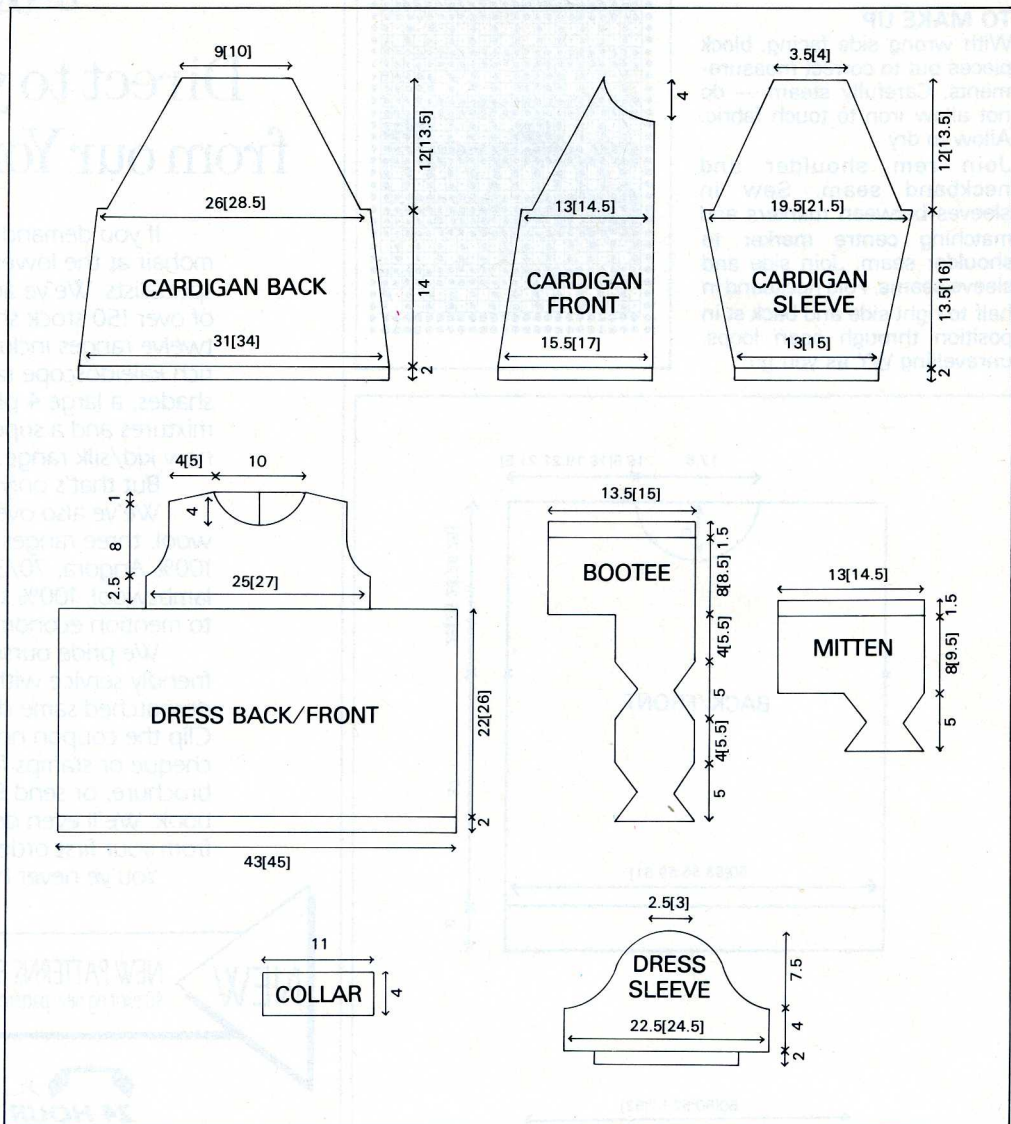
PUNCHCARD PATTERN

Punch card before starting to knit.

FAIR ISLE AND SLIP STITCH BORDER

Set carriage for Fair Isle knitting.

Using MC in feeder 1/A and B



in feeder 2/B, K4 rows.
Using MC only, K2 rows.
Disconnect RC. Set carriage for slip stitch knitting. Using A, K8 rows. Pick up loops of A from 8 rows below and hang on to corresponding Ns. Reconnect RC. Set machine for st st. Cont using MC.

CARDIGAN BACK

Push 95[103] Ns to WP.
* Using WY, cast on and K a few rows ending CAL. Using nylon cord, K1 row. Set RC at 000. Using MC and MT-1, K10 rows. Transfer every alt st on to adjacent N. Leave empty Ns in WP. K11 rows. Make a hem by hanging loops from first row worked in MC on to corresponding Ns. Using MT, K1 row *

Set RC at 000. Dec 1 st. 94[102] sts. K5 rows. ** Insert punchcard and lock on first row. Set machine for patt. K1 row. Release punchcard and work Fair Isle and slip st border **. *At the same time* dec 1 st at each end of next and every foll 6th row, 8 times in all. 78[86] sts. K until RC shows 58.

SHAPE RAGLAN

Set RC at 000. Cast off 2 sts at beg of next 2 rows. Dec 1 st, fully fashioned, at each end of next and every foll alt row until 28[30] sts rem. K until RC shows 48[56]. Cast off.

RIGHT FRONT

Push 47[51] Ns at right of centre 'O' to WP. Work as given for back from * to *. Set RC at 000. K5 rows. Work as given for back from ** to ** and *at the same time* dec 1 st at right edge on next and every foll 6th row, 8 times in all. 39[43] sts. K until RC shows 58.

SHAPE RAGLAN

Set RC at 000. Cast off 2 sts at beg of next row. K1 row. Dec 1 st, fully fashioned, at right edge on next and every foll alt row to end. *At the same time* work a buttonhole over the 3rd st in from left edge when RC shows 18[24] and 28[34]. Work until RC shows 33[39]. CAL.

SHAPE NECK

Keep raglan shaping at right edge correct. Cast off 4[5] sts at beg of next row. K1 row. Cast off 3 sts at beg of next row. K1 row. Cast off 2 sts at beg of next row. Dec 1 st at neck edge on every foll alt row, 5 times in all. Fasten off.

LEFT FRONT

Work as given for right front, reversing N setting, shapings and omitting buttonholes.

SLEEVES

Push 39[45] Ns to WP. Work as given for back from * to *. Inc 1

st. 40[46] sts. Set RC at 000. Using MT, inc 1 st at each end of every foll 5th[6th] row, 9 times in all. 58[64] sts. K until RC shows 54[64].

SHAPE RAGLAN

Set RC at 000. Cast off 2 sts at beg of next 2 rows.

1ST SIZE ONLY

Dec 1 st, fully fashioned, at each end of next and every foll alt row until 10 sts rem.

2ND SIZE ONLY

K2 rows. Dec 1 st, fully fashioned, at each end of next and every foll 3rd row, 4 times in all. K1 row. Dec 1 st, fully fashioned, at each end on next and every foll alt row until 12 sts rem.

ALL SIZES

K until RC shows 48[56]. Cast off.

TO MAKE UP

Wash and block pieces. Steam press avoiding border. Join raglan seams.

EDGING

Push 3 Ns to WP. With wrong side facing and starting at lower edge of left front, pick up 3 sts and hang on to Ns. Using MC and MT-3, K8 rows. Pick up the next 3 sts from front edge and place on to the same Ns (2 sts on each N). K8 rows. Cont to work up left front edge, along neck edge and down right front edge. Cast off the last 3 sts. Join side and sleeve seams. Sew on buttons.

DRESS

SKIRT

BACK AND FRONT ALIKE

Push 129[135] Ns to WP. Work as given for cardigan back from * to *. Set RC at 000. K 88[104] rows. Using WY, K a few rows and release from machine.

BACK YOKE

*** Push 76[82] Ns to WP. CAR. With wrong side of back skirt facing, hang last row of MC evenly on to Ns, dec 53 sts as you go. Using MC and MT-1, K3 rows. Transfer every alt st on to adjacent N. Leave empty Ns in WP. K4 rows. Make a hem by hanging loops from first row of MC on to corresponding Ns. Using MT, K1 row ***. Set RC at 000. K10 rows.

DIVIDE FOR BACK OPENING AND SHAPE ARMHOLE

Using nylon cord, K 38[41] sts at left by hand taking Ns down into NWP. Cont on rem 38[41] sts at right for first side. Cast off 3 sts at beg of next row. K1 row. Cast off 2 sts at beg of next row. K1 row. Dec 1 st at beg of next and every foll alt row, 6 times in all. 27[30] sts. K until RC shows 41. CAL.

SHAPE SHOULDER

Push 4[5] Ns at right to HP, K2 rows, 3 times. 12[15] Ns in HP.

Cast off rem 15 sts for back neck. K1 row returning Ns from HP to WP. Using WY, K a few rows and release from machine.

Unravel nylon cord over sts at left. Reset RC at 10. Complete to correspond with first side, reversing shapings.

FRONT YOKE

Work as given for back yoke from *** to ***. Set RC at 000.

K1 row. Work as given for cardigan back from ** to **. RC shows 8. Using MC, K2 rows.

SHAPE ARMHOLES

Cast off 3 sts at beg of next 2 rows. Cast off 2 sts at beg of next 2 rows. Dec 1 st at each end of next and every foll alt row, 6 times in all. 54[60] sts. K until RC shows 30. CAR.

SHAPE NECK

Using a length of MC, cast off the centre 10 sts. Using nylon cord, K 22[25] sts at left by hand taking Ns down into NWP. Cont on rem 22[25] sts at right for first side. K1 row. Cast off 3 sts at beg of next row. K1 row. Cast off 2 sts at beg of next row. K1 row. Dec 1 st at neck edge on next and every foll alt row, 5 times in all. *At the same time* when RC shows 41, CAL.

SHAPE SHOULDER

Push 4[5] Ns at right to HP, K2

rows, twice. K1 row returning Ns from HP to WP. Using WY, K a few rows over rem 12[15] shoulder sts and release from machine.

Unravel nylon cord over sts at left bringing Ns back into WP. Reset RC at 30. Complete to correspond with first side, reversing shapings.

SLEEVES

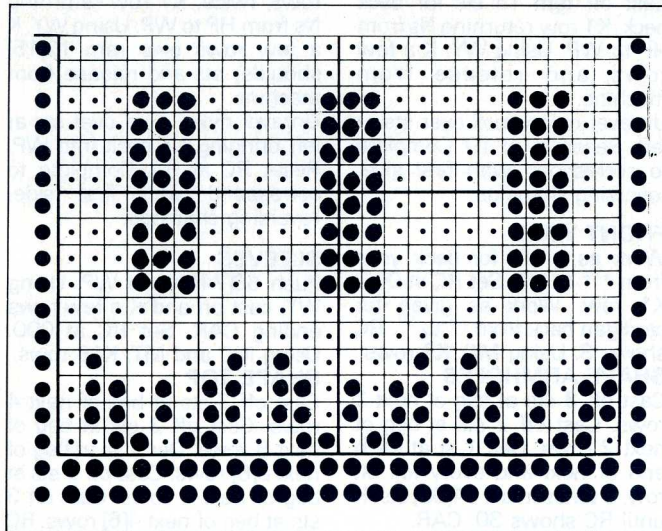
Push 68[74] Ns to WP. Using WY, cast on and K a few rows ending CAR. Set RC at 000. Using MC and MT, K16 rows.

SHAPE TOP

Cast off 3 sts at beg of next 4 rows. Cast off 2 sts at beg of next 8 rows. Dec 1 st at beg of next 8[6] rows. Cast off 2 sts at beg of next 6 rows. Cast off 3 sts at beg of next 4[6] rows. RC shows 46. Cast off rem 8[10] sts.

CUFFS

Push 41[45] Ns to WP. With wrong side of sleeve facing, hang loops from first row of MC evenly on to Ns, dec 27[29] sts as you go. Set RC at 000. Using MC and MT-1, K3 rows. Transfer every alt st on to adjacent N. Leave empty Ns in WP. K4 rows. Using MT+4, K1 row. Cast off using latch tool method.



COLLAR (KNIT TWO)

Push Ns 5-37 at right of centre 'O' to WP. 33 Ns. Using MC, cast on by hand. CAL. Set RC at 000. Using MC and MT, K2 rows. Work as given for cardigan back from ** to **. Using MC, K8 rows. Using WY, K a few rows and release from machine.

EDGING

Follow instructions given for cardigan.

Work edging along 3 sides of collar leaving the WY side free. Work a second collar piece to correspond.

TO MAKE UP

Wash and block pieces. Steam press avoiding border.

Graft shoulder seams tog. Mark centre front neck. Push 33 Ns to WP. With wrong side facing, hang one half of neck edge from centre front point to centre back opening on to Ns. With wrong side of one collar piece facing, hang last row of MC on to Ns. Using MC and MT+4, K1 row. Cast off using latch tool method.

Rep for rem half of neck edge. Sew in sleeves gathering to fit. Join side and sleeve seams.

Fold cuffs in half to inside and catch in position. Using MC, work one row of double crochet around centre back opening. Mark position for 4 buttonholes on right side of opening. Work a second row of double crochet making 4 buttonhole loops as you go. Turn collar to outside. Join edging to approx 1cm at centre front. Sew on buttons.

HAT

Push 96[106] Ns to WP. Using MC, cast on by hand. CAL. Set RC at 000. Using MC and MT, K24 rows. Place a marker at each end on last row. Work as given for cardigan back from ** to **.

Using MC, K until RC shows 50[54]. Transfer every alt st on to adjacent N. Return empty Ns to NWP. Using MT-2, K4 rows. Break yarn. Thread end through sts and remove from machine.

EAR FLAPS

Push 21[23] Ns to WP. Using MC, cast on by hand. CAR. Set RC at 000. Using MC and MT-1, K16 rows. Push 1 N at opposite side to carriage to HP, K1 row, 18[20] times. 3 Ns in WP. Return 1 N from HP to WP at opposite side to carriage, K1

row, 18[20] times. K16 rows. Cast off.

Turn flap right side out. Push 4 Ns to WP. Hang pointed edge of flap on to Ns. Set machine for cord knitting. Using MC and MT-2, K until cord measures approx 30cm. Cast off.

HAT TRIM (KNIT THREE)

Push 4 Ns to WP. Using MC, cast on by hand. Set machine for cord knitting. Using MT-1, K until cord measures 7.5cm. Cast off. Work one more cord in A and one in B.

TO MAKE UP

Wash and block pieces. Steam press avoiding border.

Join centre back seam from marker to top edge. Turn right side out and join seam from cast on edge to marker. Allow edge to roll. Draw up sts at centre and secure. Join sides of flaps. Attach flaps to inside edge of hat.

RIGHT BOOTEE

Push 41[45] Ns to WP. ■ Using WY, cast on and K a few rows ending CAL. Using nylon cord, K1 row. Set RC at 000. Using MC and MT-1, K7 rows. Transfer every alt st on to adjacent N. Leave empty Ns in WP. K8 rows. Make a hem by hanging loops from first row worked in MC on to corresponding Ns. Using MT, K1 row. CAR. Set RC at 000. K1 row.

Insert punchcard upside down and lock on last row. Set machine for patt. K1 row. Release punchcard. Set carriage for slip st knitting. Disconnect RC. Using A, K8 rows. Pick up loops of A from 8 rows below and hang on to corresponding Ns. Set carriage for st st. Reconnect RC. Using MC, K2 rows. Set carriage for Fair Isle knitting. Using MC in feeder 1/A and B in feeder 2/B, K4 rows. Set machine for st st ■.

Using MC, K until RC shows

28[30]. Transfer every 4th st on to adjacent N. Leave empty Ns in WP. K4 rows. Using WY, K a few rows over 20[22] sts at left and release from machine. Cont on rem 21[23] sts at right. Set RC at 000. Using MC and MT, K 16[22] rows.

SHAPE TOE

■ ■ Push 1 N at opposite side to carriage to HP, K1 row, 10 times. Return 1 N at opposite side to carriage from HP to WP, K1 row, 10 times ■ ■. K 16[22] rows.

SHAPE HEEL

Work as given from ■ ■ to ■ ■. Using WY, K a few rows and release from machine.

LEFT BOOTEE

Work as given for right bootee, reversing shapings.

TO MAKE UP

Wash pieces. Allow to dry before steam pressing. Graft sts held on WY tog. Join side and foot seams. Working over 4 Ns and using MC and MT, knit 2 x 40cm lengths of cord. Thread through eyelets and tie.

MITTENS

Push 39[43] Ns to WP. Work as given for bootees from ■ to ■, inc 1 st after working picot hem. 40[44] sts. K4 rows. Transfer every 4th st on to adjacent N. Leave empty Ns in WP. K 20[26] rows. Using WY, K a few rows over 20[22] sts at left and release from machine.

SHAPE TOP

Work as given for bootee from ■ ■ to ■ ■. Using WY, K a few rows and release from machine. Work second mitten to correspond, reversing shapings.

TO MAKE UP

Wash pieces. Allow to dry before steam pressing. Graft sts held on WY tog. Working over 4 Ns and using MC and MT, knit 2 x 40cm lengths of cord. Thread through eyelets and tie.