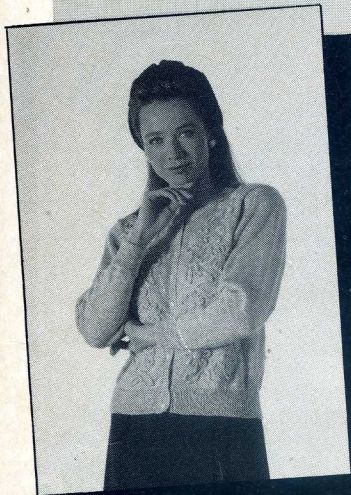




Appliqué Cardigan

DESIGNED BY ELAINE CATER



MACHINES

These instructions are written for standard gauge punchcard machines with ribber attachment.

YARN

Amber yarn Mirage.

FIBRE CONTENT

62% Acrylic, 16% Viscose, 14% Nylon, 8% Polyester.

COLOUR

We used Pink M3 (MC).

STOCKISTS

If you have any difficulty in obtaining this yarn, please write to Amber yarn, Dock Mills, Dockfield Terrace, Shipley, W. Yorks BD17 7AW.

SIZES

To suit bust 86(91,96,101)cm. Figures in brackets () refer to larger sizes; where there is only one set of figures, this applies to all sizes.

MATERIALS

Amber yarn Mirage.
2 x 340g cones of MC.
9 buttons.
Matching thread.

MAIN TENSION

30sts and 42 rows to 10cm measured over st st (tension dial approx 5).

ABBREVIATIONS

See page 42.

NOTE

1 cone is sufficient to knit first size cardigan without appliqué trim.

BACK

With FB in position and CAL, set machine for 1x1 rib. Push 151(159,165,173) Ns into WP on RB and corresponding Ns on FB and arrange for 1x1 rib. ** Using MC, cast on and K4 tubular rows. CAR. Set machine for 1x1 rib. RC000. Using MT-3/MT-3, K24 rows. Trans to RB **. Inc 1 st, 152(160,166,174) sts. Set RC at 000. MT K 102(102,110,110) rows.

ARMHOLE SHAPING

Set RC at 000. Cast off 5sts at beg of next 2 rows. Dec 1 st at each end of next and ev foll alt row, 15 times in all. 112(120,126,134)sts rem. K to RC 104.

NECK SHAPING

Leaving centre 52sts in WP, push rem 30(34,37,41) Ns at R and L of centre to HP. Using WY, K a few rows over centre sts and release from machine. Push rem Ns at R of centre to WP. Using MC, K4 rows. Remove on to WY. CAL, K4 rows over rem sts. Remove on to WY.

RIGHT FRONT

With FB in position and CAL, set machine for 1x1 rib. Push 73(77,79,83) Ns into WP on RB and corresponding Ns on FB and arrange for 1x1 rib. Work as given for back from ** to **. Inc 1 st, 74(78,80,84)sts. Set RC at 000. MT, K 102(102,110,110) rows.

ARMHOLE SHAPING

Set RC at 000. Cast off 5sts at beg of next row, K1 row. Dec 1 st at beg of next and ev foll alt row, 14 times in all. 54(58,60,64)sts rem. K to RC 79.

NECK SHAPING

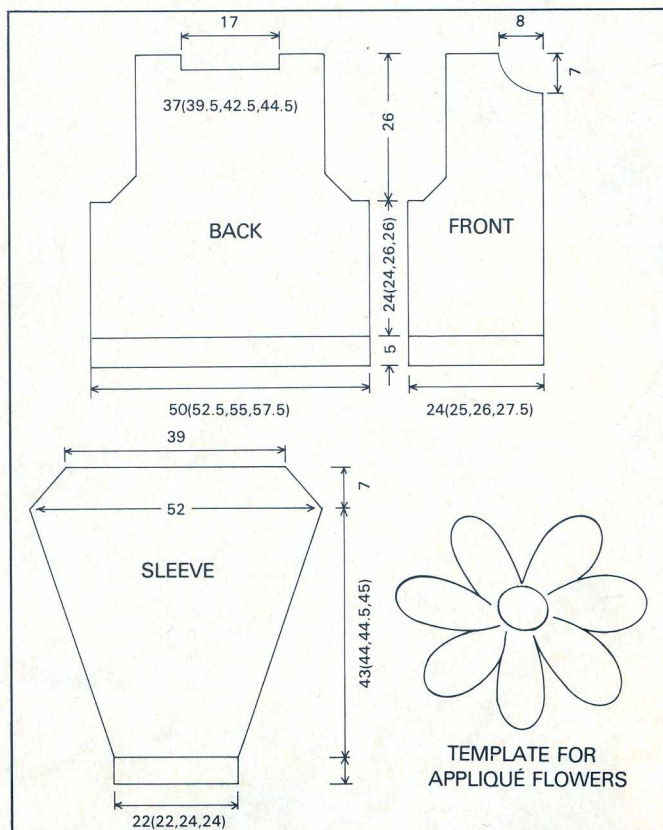
CAL. Cast off 8sts at beg of next row, K1 row. Cast off 4 sts at beg of next row, K1 row. Cast off 3sts at beg of next row, K1 row. Cast off 2sts at beg of next and foll alt row, K1 row. Dec 1 st at neck edge of next and ev foll alt row, 5(5,4,4) times in all. 30(34,37,41)sts rem. K to RC 108. Remove on to WY.

LEFT FRONT

Work as given for R front reversing the shaping by starting with CAR.

SLEEVES

With FB in position and CAL, set machine for 1x1 rib. Push 67(67,73,73) Ns into WP on RB and corresponding Ns on FB and arrange for 1x1 rib. Work as given for back from ** to **. Inc 1 st, 68(68,74,74)sts. Set RC at 000. MT, K4 rows. Inc 1 st at each end of next and foll 4th row, 44(44,23,19) times. K 0(0,4,4) rows. Inc 0(0,1,1)st at each end of next and



Appliqué Cardigan

ev foll-5th row, 0(0,18,22) times in all. 156sts. K to RC 180(184,186,190).

ARMHOLE SHAPING

Set RC at 000. Cast off 5sts at beg of next 2 rows. Dec 1 st at each end of next and ev foll alt row, 14 times in all. 118sts rem. K1 row. Cast off loosely.

NECKBAND

Join shoulder seams. Push 30(34,37,41)Ns on RB to WP. With right side of right front facing, pick up sts from right shoulder and place on Ns. With wrong side of back facing, pick up sts from corresponding shoulder and place on same Ns. MT+5, K1 row. Cast off using latch tool. Remove WY. Rep for L shoulder. With FB in position and CAL, set machine for 1x1 rib. Push 131 Ns into WP on

RB and corresponding Ns on FB and arrange for 1x1 rib. Work as given for back, knitting 9 rows rib. Trans sts to RB, MT, K1 row. With wrong side of work facing, pick up sts as folls: 35sts along each front neck edge, 4sts along each side of back neck edge, and 52sts along back below WY. MT+5. K1 row. Cast off using latch tool. Remove WY.

BUTTONHOLE BAND

With FB in position and CAL, set machine for 1x1 rib. Push 137(137,145,145) Ns into WP on RB and corresponding Ns on FB and arrange for 1x1 rib. Using MC, cast on and K4 tubular rows. Set machine for 1x1 rib. MT-3/MT-3, K4 rows. Work 9 buttonholes evenly along row by trans 1 st on FB to its adjacent N on RB. Leave

empty Ns in WP. K5 rows. Trans sts to RB. MT, K1 row. With wrong side of right front facing, pick up 137(137,145,145)sts evenly along front edge and place on to Ns. MT+5, K1 row. Cast off using latch tool.

BUTTON BAND

Work as given for buttonhole band omitting the buttonholes.

FLOWER TRIM

(MAKE 12)

Using MC, cast on 3sts by hand. MT-2, K180 rows. Cast off.

LEAF TRIM

(MAKE 10)

Using MC, cast on 3sts by hand. MT-2, K150 rows. Cast off.

TO MAKE UP

Pin out each piece to measurements given. Cover with damp cloth and allow to dry. Set in sleeves. Join side and sleeve seams. Sew on buttons. Work 1 row of double crochet along upper and lower edges of front bands. Trace template given for flowers. Working on a cushioned surface like an ironing board, pin petals in place over template and stitch together winding the end of the cord to form the centre of flower. Pin flowers in place on cardigan front. Pin shorter cords in place to form leaves as shown in photo. Using matching thread, stitch in place. It may be easier to work on the cords if you place a piece of stiff cardboard between the fronts and back before starting to pin the flowers and leaves in place.